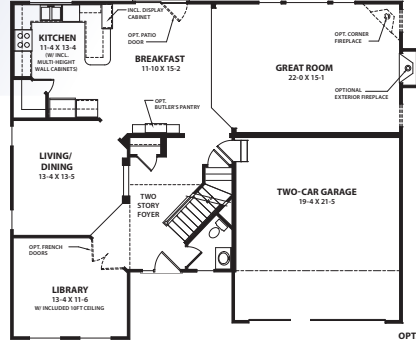


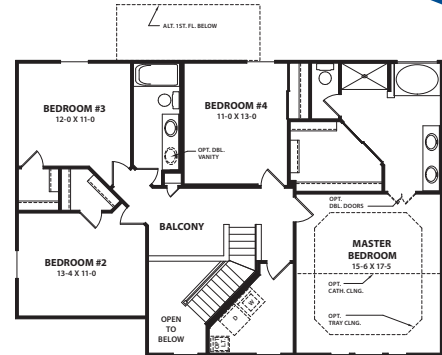
2

THE BRADFORD

1214 SADDLETOP RIDGE | BATAVIA, OH 45103
Saddletop Ridge at Lexington Run Price: \$267,900



First Floor



Second Floor

Fischer Homes welcomes you to Saddletop Ridge at Lexington Run, Clermont County's premier planned community. A single stop at our Bradford model makes it possible for our professional sales counselors to help guide you through the process of selecting the right home at the right price at the right location throughout Clermont County.

The Bradford features:

- 4 bedrooms/2.5 baths • Two-story foyer • 1st floor study with French doors and 10' ceiling
- Family room with window wall, fireplace & entertainment center • Kitchen with detailed peninsula and serving area • Morning retreat with butler's pantry and walkout on to patio
- Master bedroom with tray ceiling & designer bath with walk-in closet • Large second floor laundry/hobby room

By Fischer Homes
513-732-0750
www.fischerhomes.com

