

# 38

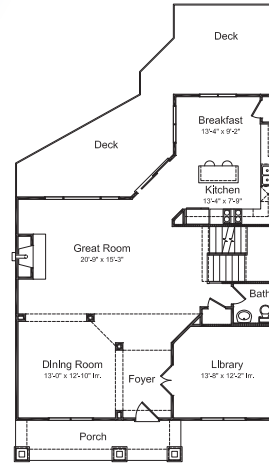
## HARPER'S RIDGE

516 SCENIC DR. | COVINGTON, KY 41011

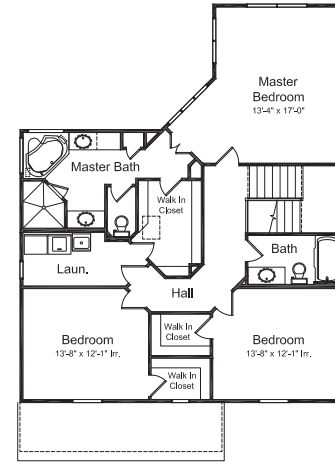


**DIRECTIONS** From I-75 South take the Kyles Lane exit and turn right off the exit. Turn right onto Dixie Highway. Turn right on S. Arlington. Turn left on Cecelia Ave. Slight right turn on Scenic Dr.

By **Cutter Custom Homes**  
859-781-6924  
[www.cutterconstruction.com](http://www.cutterconstruction.com)



First Floor



Second Floor

This 2,462 square foot home sits high atop this beautiful ridge overlooking Cincinnati. The views are panoramic and simply breathtaking. With a custom built retaining wall and a wonderful deck this home maximizes the view. With a craftsman charm this home is warm and inviting. The interior also opens all spaces to the view and is loaded with amenities. Some amenities include a fully loaded master suite with corner tub, oversized laundry room, custom built-ins around the fireplace, hardwood floors and a large kitchen boasting custom cabinetry and granite countertops.