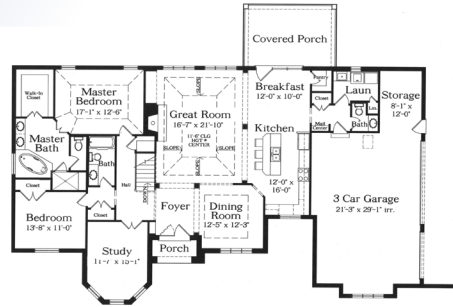


# 40

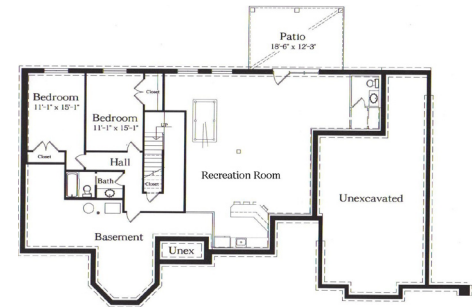
## THE STONECHASE

5460 CREEK RIDGE CT. | TAYLOR MILL, KY 41015

High Ridge Park Price: \$700,000



First Floor



Lower Level

**DIRECTIONS** I-275 to Taylor Mill exit, right (1st light) on Old Taylor Mill Road, right on Wayman Branch, left into High Ridge Park onto High Ridge Drive, left on Creek Ridge Court.

By Gerdes & Flesch Custom Homes

859-356-0011

[www.gerdesandflesch.com](http://www.gerdesandflesch.com)



We proudly introduce "The Stonechase," the latest addition into one of the most desirable neighborhoods in Northern Kentucky! This beautiful ranch offers 4,000 square feet of supreme quality, stained woodwork, maple kitchen cabinets, granite countertops, an open floor plan, the most peaceful wooded views and much, much more! George Gerdes and Tom Flesch have spent their entire careers creating custom homes, using Old World Craftsmanship and only the finest suppliers and materials available.