

# 42

## THE RAVENNA

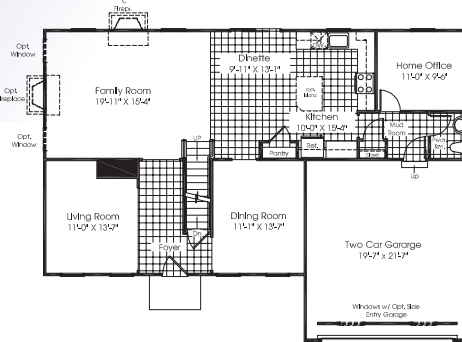
3521 ASHFORD RD. | INDEPENDENCE, KY 41051  
Ashford Village



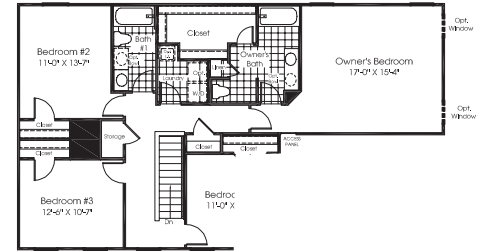
**DIRECTIONS** I-275 East to KY Highway 16. Travel South on KY Highway 16 to Mills Road. Take a left on Mills Road to Ashford Drive. Model is first home on the right.

By Ryan Homes  
859-363-7111  
www.ryanhomes.com

**Ryan Homes**  
Welcoming Families Home  
For Over 60 Years



First Floor



Second Floor

Featuring a center hall colonial design with a rear staircase, the Ravenna offers all the amenities you need for modern life in a timeless design. Walking into the Foyer, a generous Family Room is straight ahead, with a formal Living Room and Dining Room to either side. Add a fireplace in either of two locations in the Family Room to make it even more cozy. The ample eat-in Kitchen features an optional island and large pantry. Add the optional Morning Room with breakfast bar and gourmet island to create a cook's paradise with plenty of room for entertaining. Off the Kitchen is a large Home Office, connected to the living areas but still offering privacy. Upstairs are 4 bedrooms and 2 baths standard, along with a coveted 2nd floor Laundry. The Owner's Suite is luxurious and features a huge walk-in closet, as well as you can upgrade to an oversized soaking tub and separate shower. You can also add a Bonus Room and optional closet for a fifth bedroom, playroom – whatever you needs. The Ravenna offers today's homebuyer an option for every need.