

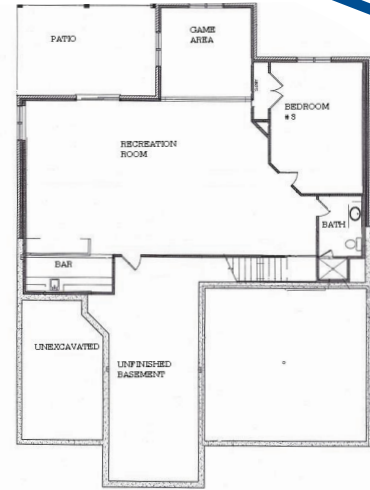
# 45

## SERRANO

966 WESTBROOKE CT. | VILLA HILLS, KY 41017  
Country Squire Estates Price: \$330,000+



First Floor



Lower Level

**DIRECTIONS** I-75 to Buttermilk Pike exit #186, West off exit, 1 mile to Rosewood, 1 mile to right on Squire Valley Drive, right on Woodside Court, left on Westbrooke Court.

sponsored by:

**By Toebben Builders**  
859-331-1560  
www.toebben.com



- Every home individually designed
- Maintenance free community
- 6 lakes/wooded lots
- Community pool, tennis, clubhouse
- 3 bedroom ranch plan 3,600 SF
- Private wooded cul-de-sac lot
- Screened deck
- First floor library
- Gourmet kitchen
- Large front sitting porch
- High efficiency smart living construction
- Home is available to purchase

Model is open every Sat. – Sun. 1-5pm | “Discover the difference Old World Craftsmanship makes”