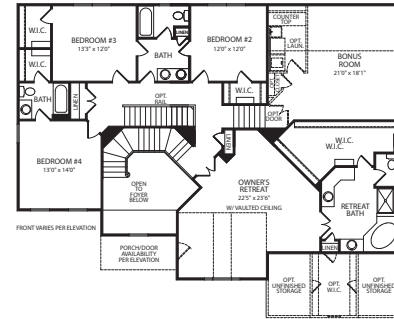
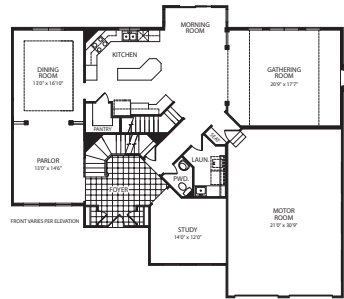


3

HARTWICKE I

106 Silas Drive, Loveland, OH 45140 / White Pillars / \$576,000



Enjoy executive style living in the Hartwicke, featuring a dramatic two-story Welcome Room, which leads to a quiet Study. The Parlor and Dining Room are perfect for formal occasions. A spacious Kitchen includes a serving island, walk-in Pantry, and light filled Morning Room. The Gathering Room offers a volume ceiling, wall of windows, custom built-ins and relaxing fireplace. A dramatic turned staircase leads from the Foyer to a private second floor Owner's Retreat, presenting a vaulted ceiling, sitting area, luxurious Bath and private balcony. A rear staircase leads to two large Bedrooms sharing a Jack and Jill Bath; a Guest Suite with its own Bath and a step up Bonus Room. **Directions to Entry:** I - 275 to North on Wards Corner (towards Loveland) turn right onto Oakland Road to White Pillars entry on right.



ZARING
PREMIER HOMES
A Dress Company

Zaring Premier Homes
513-683-5501 / www.zaring.com

